

## 2021 Year-End Report

### FOREST FIRE LOOKOUT ASSOCIATION

Northwest Montana Lookout Association (NWMTLA) – Local Chapter  
MONTANA / IDAHO NORTH CHAPTER

Gary Weber, Director

### LOCAL NWMTLA CHAPTER OFFICERS:

Chuck Manning, Board Chair

Deb Starling, Vice-Chair

Nancy Manning, Secretary

Cathy Calloway, Treasurer

### 2021 MOUs and/or Challenge Cost Share (CCS) Agreements:

Flathead National Forest (pending)

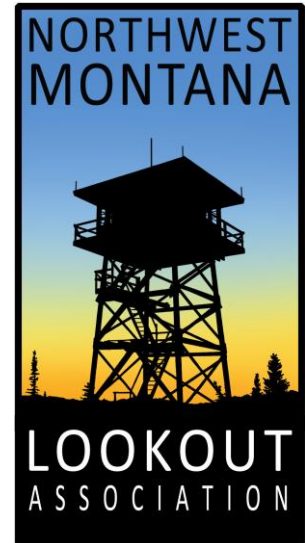
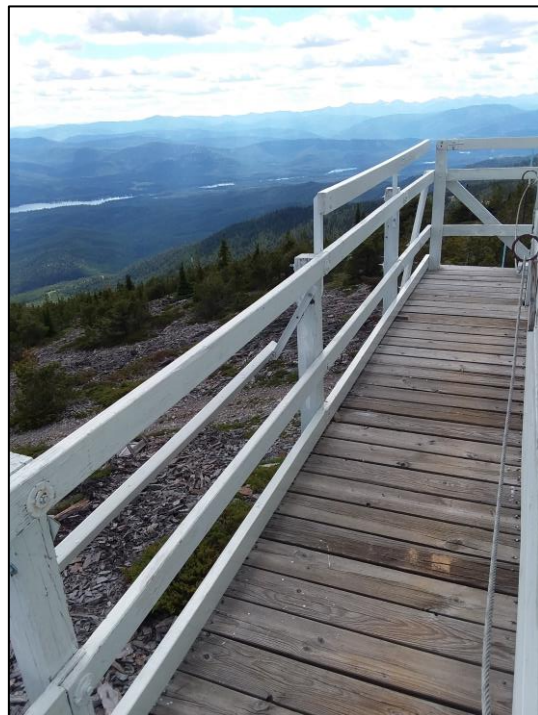
Kootenai National Forest

Glacier National Park

Montana DNRC

### PROJECTS AND ACTIVITIES:

**Meadow Peak Lookout Wrap-up - Kootenai National Forest** – Throughout the spring and early summer, the NWMTLA helped the Libby Ranger District put finishing touches on Meadow Peak Lookout in preparation for it being placed in the Recreation.gov program. Tasks included, but not limited to, attaching safety screen on the railing, making windows operable to allow for cross ventilation, digging an outhouse hole and installing a vault for a privy with a view. Total in-kind value to Ranger District was over \$6,400.



**McGuire Mountain Lookout Restoration Project - Kootenai National Forest** – This project was a Forest Service Resource Advisory (RAC) funded project. Starting in mid-June, the windows were removed and transported to an off-site location to be completely refurbished and in August packed back up to the lookout to be reinstalled. During the month of July, the structure was squared and leveled, window sills, soffit, fascia, and corner trim were repaired/replaced as needed. The entire structure was painted inside and out. Total project value including RAC funding exceeded \$60,000.

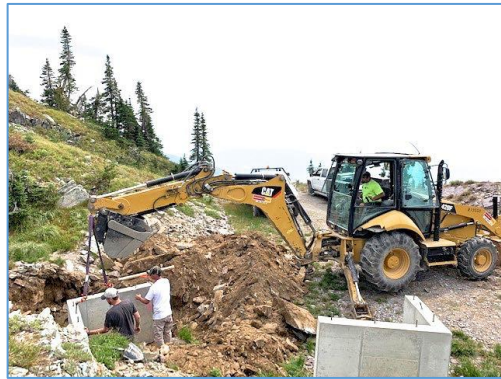


**(Big) Swede Lookout Project - Kootenai National Forest** – This project was divided into two parts. The first part consisted of volunteers glazing 52 windows, replacing catwalk posts, railing, and landing posts. The second project consisted of scraping, sanding and painting the lookout. In 2019 a new roof was put on and additional stabilizing of the roof in 2020.



**Werner Peak Lookout Project - Montana Department of Natural Resources and Conservation**

Two phases of the Werner Lookout project consisted of: finishing the painting of the catwalk, railing and window trim plus touchup; and second, digging a hole and installing a vault.



**Huckleberry Lookout Condition Assessment - Glacier National Park**

The assessment identified need for future maintenance including dry rot, window reglazing, cracked exterior boards, failing catwalk railing, and painting. Huckleberry Lookout is a 14'x14' wood structure but of a second design with the hip roof extended to cover the catwalk. The basic design differs from Forest Service L-4s in that the shutters are removable and do not fold up for shading. An original cupola lookout on the site was replaced by this structure in 1933.



**Loneman Lookout Condition Assessment – Glacier National Park** - Loneman Lookout is a standard wood frame, 14x14-ft. house set on a 10-ft. enclosed tower with catwalk. The condition assessment was conducted over a two-day period. Loneman lookout was found to be in good condition with only minor maintenance issues to be addressed.



**Scalplack Lookout Condition Assessment – Glacier National Park** - Scalplack Lookout was found to be in good condition with only minor maintenance items noted as it is staffed and maintained during the fire season. Scalplack is a standard wood frame, 14x14-ft. house set on a 10-ft. enclosed tower with catwalk.



#### **OBJECTIVES FOR 2022:**

- Continue membership and donor campaign - 2021 members and donors are ~150.
- Continue to increase our outreach – 2021 contact list are ~700.
- Continue updating our website with current information and maintain our social media platforms.
- Continue to develop positive relationships with agency personnel.
- Work with agencies to mitigate project efficiency during 2021 COVID restrictions.
- Meet restoration and assessment commitments with agencies.
- Continue to signup qualified volunteers with skills necessary to accomplish required tasks.
- Complete scheduled assessments and projects on Kootenai National Forest and Glacier National Park.

#### **2021 NWMTLA LOOKOUT STATISTICS:**

- 50 - Total standing lookouts and support structures in service area
- 15 - Lookouts in active service
- 12 - Lookouts in rental program
  - 4 - Lookouts maintained as shelters
- 22 - Lookouts on inventory – use not specified
  - 1 - Lookouts converted to alternate function
  - 0 - Lookouts schedule to be removed
  - 0 - New lookouts under construction

Respectfully submitted on 1/11/2022,

A handwritten signature in black ink, appearing to read "Charles J. Hawing". The signature is written in a cursive, flowing style.

Board Chair